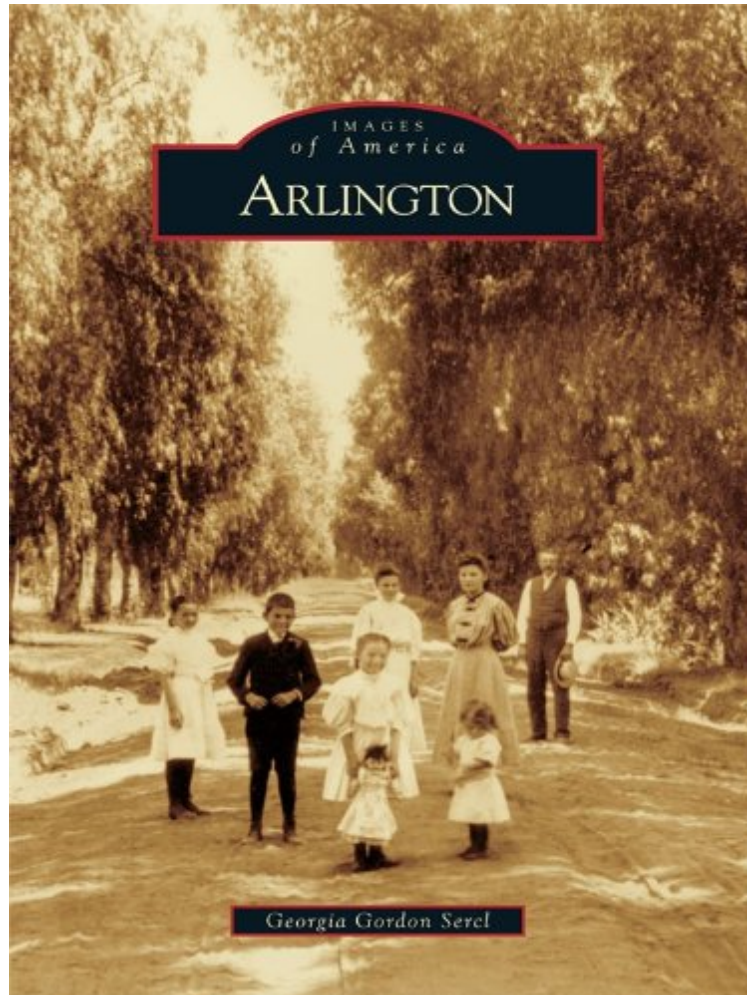


## Arlington

*Georgia Gordon Sercl*

*DOC / \*audiobook / ebooks / Download PDF / ePub*



[Download](#)

[Read Online](#)

#2355069 in eBooks 2007-11-21 2007-11-21 File Name: B0093EL2RE | File size: 36.Mb

**Georgia Gordon Sercl : Arlington** before purchasing it in order to gage whether or not it would be worth my time, and all praised Arlington:

0 of 0 people found the following review helpful. I felt like I was leafing through a family photo album (not in the good way)By Craig IsamanI have seen many of the books in the Images Of America series. Most of them are very informative and have a variety of information. I realize that Riverside (Arlington) has only been around since the late 1800's, but there surely must be a lot of history involved with this area. I was disappointed with this volume as it was approximately 80 percent "people" pictures, and many of them were post-1950's. The other volumes in this series are packed full of "places and things" photos, which, to me, bring out more of the history of the intended subject area. To me, these types of photos bring the past to life better because they offer a point of reference, as in most cases there are still remnants of those locations still visible, allowing you to "walk in the footsteps" of the past.I know that there are a greater variety of images available through the local library system or historical societies. I felt like I was leafing

through a family photo album on a coffee table. There is a lot more to the area than this one family tree. This book is still well presented, but it just didn't do it for me...

The neighborhood of Arlington, located about five miles southwest of downtown Riverside, was first settled in the 1870s and was later developed as a town site in 1877 by philanthropist Samuel C. Evans and William Sayward. Citrus groves flourished in the area, providing the community with a newfound wealth. Large and gracious homes were built on wide streets lined with beautiful shade trees. Arlington's commercial district at Van Buren Boulevard and Magnolia Avenue expanded to include a bank, chamber of commerce, newspaper, store, church, boardinghouse, and post office with its own Arlington postmark, in use since 1888. In the early 1900s, an electric railway was built down the center of Magnolia Avenue ending at beautiful Chemewa Park with its large trees, dance pavilion, zoo, and polo field. Today Arlington retains much of its neighborhood feeling while undergoing a large-scale redevelopment project for a future retail and commercial district.